

## Mezzanine Inspection Report

<b>Date:</b> 3/19/2015	<b>Station Name:</b> C05 - Rosslyn (Old)	<b>Mezzanine #:</b> 041	<b>Completed By:</b> Mike Butler
------------------------	--	-------------------------	----------------------------------

### Summary

Pull string installation was completed for communication ducts in upper / lower faregate arrays. Video scoping could only be partially completed for comm. / power ducts in faregates due to a 45-degree bend in both faregate arrays. Video scoping and pull string installation was completed in power duct between Kiosk and Junction Box. Pull string installation was also completed in power conduit between Junction Box and AFC Panel. All ducts / conduit appear to be in good condition and not at capacity.

Refer to photos and drawings for further information.

### Scoping of Faregate Array(s)

Task	Yes/No	Notes
<b>Communications Duct – Upper Faregate Array (7 gates)</b>		
Was video scoping completed for the entire duct run?	No	Refer to "WMATA Rosslyn Mezz 41 3inch Upper Comm Faregate.avi"
Were pull strings installed at all faregates in the array?	Yes	
Were there any obstructions or blockages? Provide details of type and specific location.	Yes	Could not get traverse 45-degree bend in faregate array.
Is the duct at capacity? Provide additional details about the dimensions of ducts and number of wires.	No	3" duct with less than 10 wires.
<b>Communications Duct - Lower Faregate Array (7 gates)</b>		
Was video scoping completed for the entire duct run?	No	Refer to "WMATA Rosslyn Mezz 41 3inch Lower Comm Faregate.avi"
Were pull strings installed at all faregates in the array?	Yes	
Were there any obstructions or blockages? Provide details of type and specific location.	Yes	Could not get traverse 45-degree bend in faregate array.
Is the duct at capacity? Provide additional details about the dimensions of ducts and number of wires.	No	3" duct with less than 10 wires.
<b>Power Duct - Upper Faregate Array (7 gates)</b>		
Was video scoping completed for the entire duct run?	No	Refer to "WMATA Rosslyn Mezz 41 6inch Upper Power Faregate.avi"
Were there any obstructions or blockages? Provide details of type and specific location.	Yes	Could not get traverse 45-degree bend in faregate array.
Is the duct at capacity? Provide additional details about the dimensions of ducts and number of wires.	No	6" duct with less than 15 wires.
<b>Power Duct - Lower Faregate Array (7 gates)</b>		
Was video scoping completed for the entire duct run?	No	Refer to "WMATA Rosslyn Mezz 41 6inch Lower Power Faregate.avi"
Were there any obstructions or blockages? Provide details of type and specific location.	Yes	Could not get traverse 45-degree bend in faregate array.
Is the duct at capacity? Provide additional details about the dimensions of ducts and number of wires.	No	6" duct with less than 15 wires.


Scoping of Power Duct - Kiosk to AFC Panel		
Task	Yes/No	Notes
<b>Kiosk to Junction Box (Distance: 60')</b>		
Was video scoping completed for the entire duct / conduit run?	Yes	Refer to "WMATA Rosslyn Mezz 41 6inch Power Kiosk to AFC Panel.avi"
Was pull string installed?	Yes	
Were there any obstructions or blockages? Provide details of type and specific location.	No	
Is the duct / conduit at capacity? Provide additional details about the dimensions of duct / conduit and number of wires.	No	6" duct with less than 10 wires
<b>Junction Box to AFC panel in Room C304 (Distance: 15')</b>		
Was video scoping completed for the entire duct / conduit run?	No	Video scoping of conduits not required.
Was pull string installed?	Yes	
Were there any obstructions or blockages? Provide details of type and specific location.	No	
Is the duct / conduit at capacity? Provide additional details about the dimensions of duct / conduit and number of wires.	No	2" conduit with less than 10 wires.
<b>Observations / Issues / Next Steps</b>		
- The total distance of power route from Kiosk to AFC Panel is 75', including 60' of existing duct and 15' of existing conduit.		
<b>Sign Off</b>		
	<b>GFP Representative</b>	<b>WMATA PRGM</b>
<b>Name:</b>	Mike Butler	
<b>Signature:</b>		
<b>Date:</b>	03/20/2015	

Photo 1 – Existing duct run from Kiosk to AFC panel

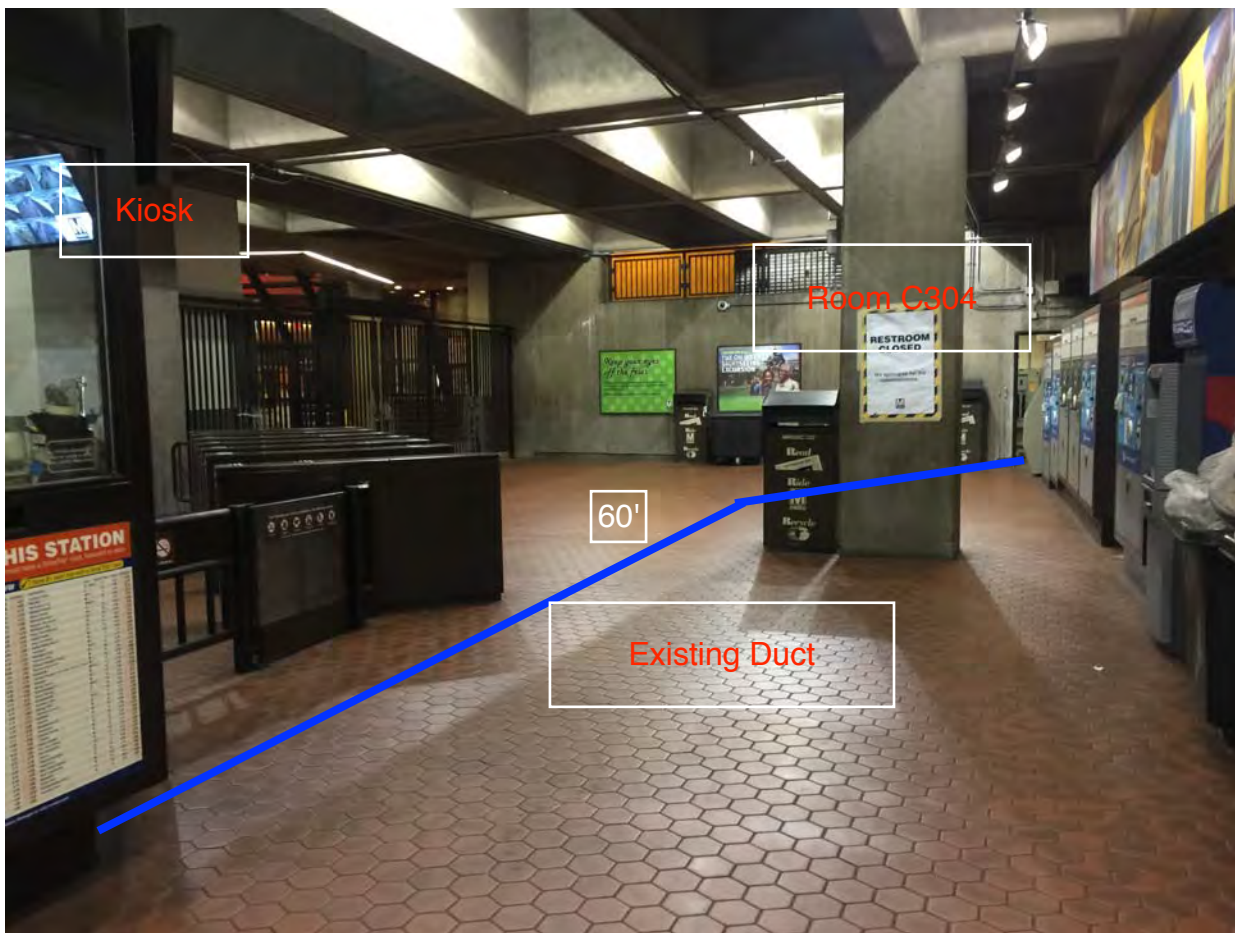
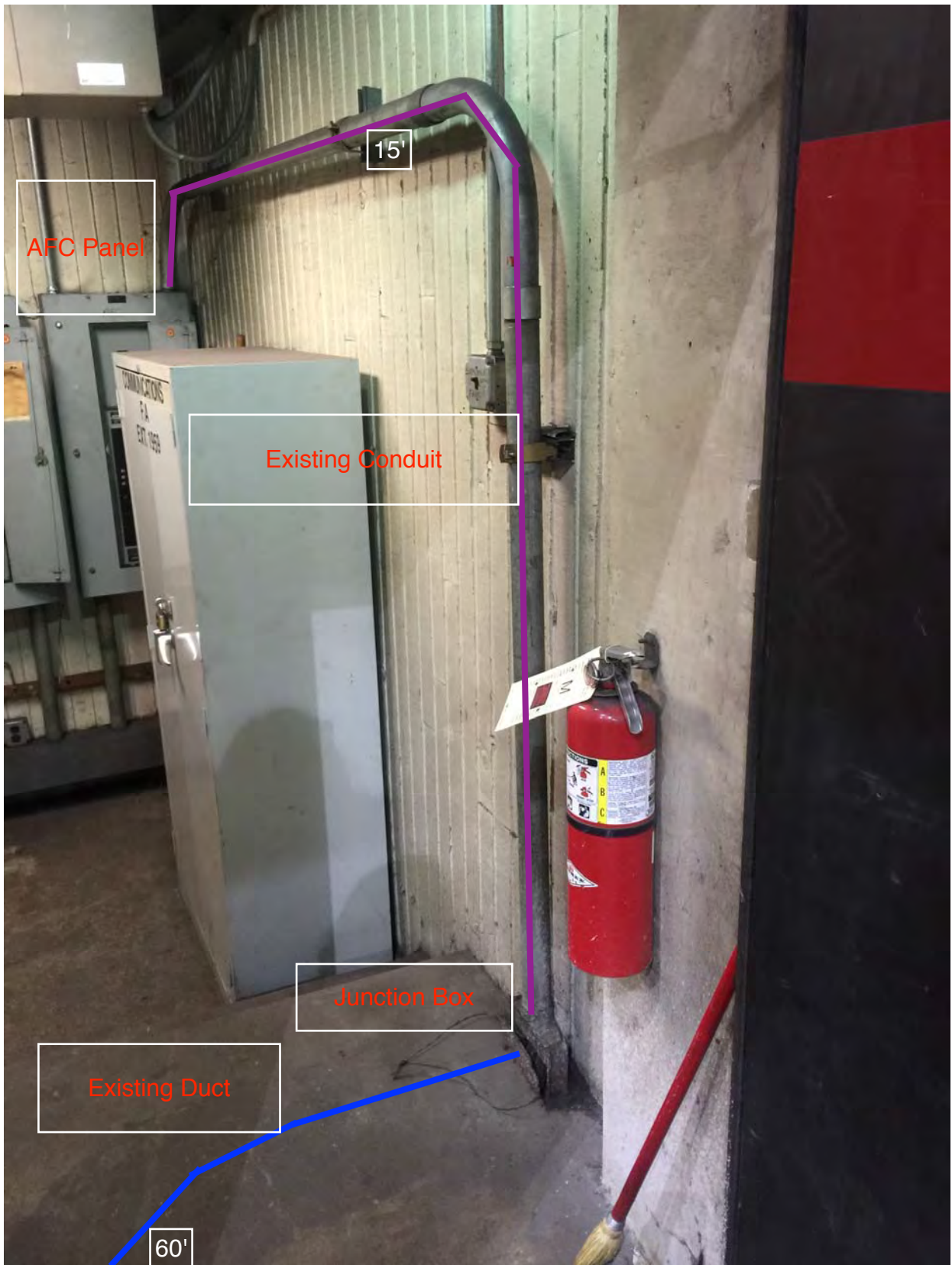


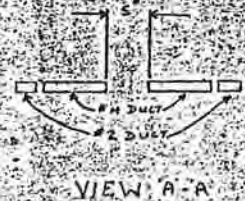
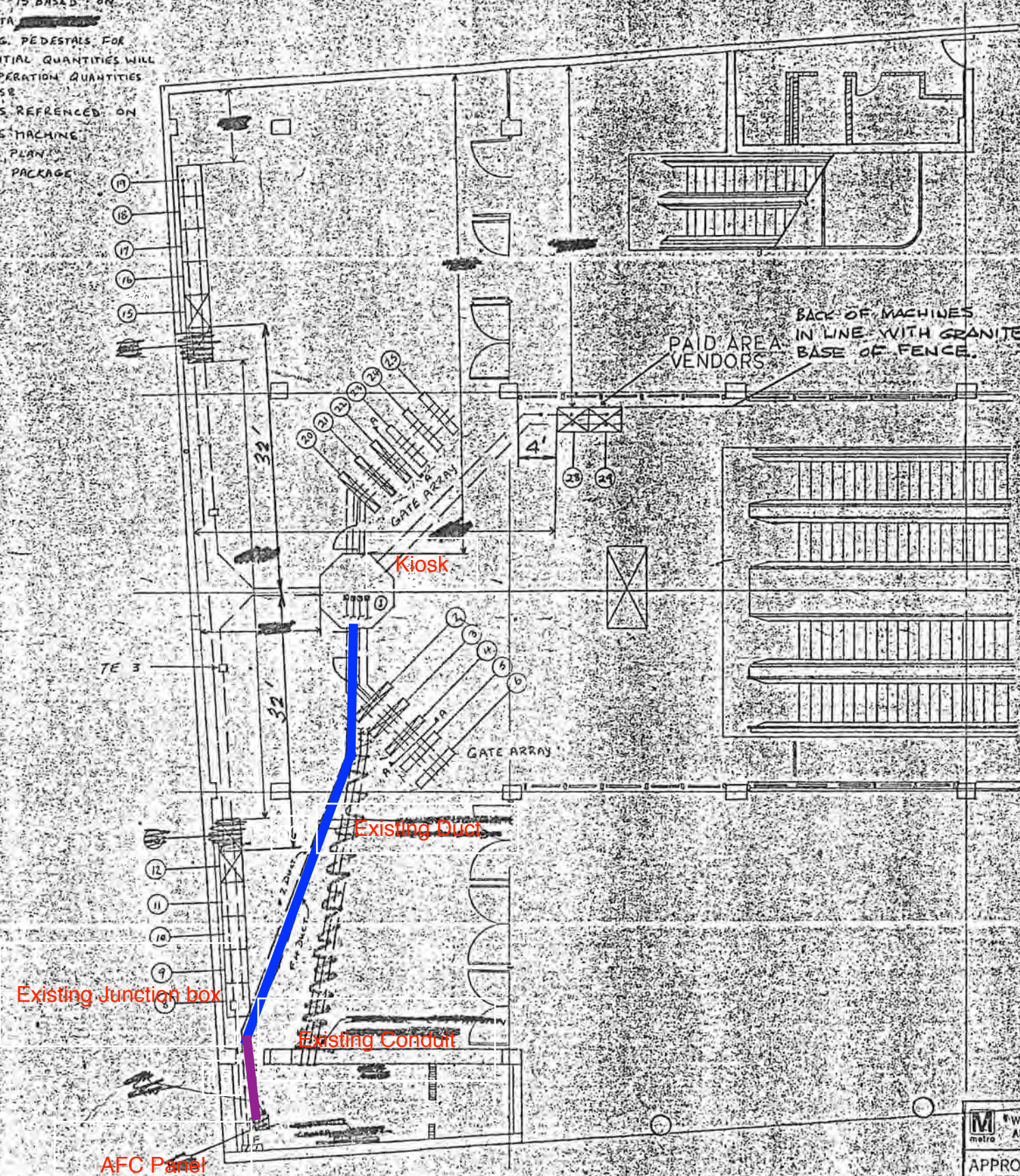
Photo 2 – Existing duct / conduit transition at Junction Box, and AFC Panel.





**NOTE**

- ① ALL INFORMATION CONCERNING DUCTS AND CONDUITS IS BASED ON INFORMATION SUPPLIED TO CUBIC WESTER DATA BY WMATA.
- ② INITIAL MACHINE INVENTORY IS DEPICTED ON THIS DWG. PEDESTALS FOR VENDORS AND BASEPLATES FOR FARE GATES. FOR INITIAL QUANTITIES WILL BE INSTALLED DURING SITE PREPARATION FOR MIN. OPERATION QUANTITIES. INITIAL QUANTITIES WERE GIVEN TO CWD ON 5/1/98.
- ③ THE MINIMUM OPERATIONAL MACHINE INVENTORY IS REFERENCED ON THIS DRAWING BY THE 'X' DRAWN THRU THE MACHINE.
- ④ FOR AS-BUILT CONTINUATION SEE DRAWING #2 INST. PLAN.
- ⑤ FOR REFERENCE DRAWINGS SEE SUPPORT DOCUMENT PACKAGE FOR THIS MEZZANINE.



**WASHINGTON METROPOLITAN AREA TRANSIT AUTHORITY**

CONTRACT NUMBER <b>22007A</b>		<b>CUBIC WESTER</b>	
REL		HUNTINGDON	
ENGR		ROSSLYN ST	
DESIGN		AFC MACHINES	
CHECK		41	
DRAWN		DESIGN ACTIVITY APPROVAL	SIZE
		<i>Walter D. Paul</i>	3/8"
BY:	<i>Patrick Spaine</i>		
DATE:	<b>2-25-77</b>		

**M** WASHINGTON METROPOLITAN AREA TRANSIT AUTHORITY  
**APPROVED AS CORRECTED**  
 (RESUBMITTAL REQUIRED)  
 Approval Does Not Relieve the Contractor of the Responsibility for the Accuracy of this Document or for Full Compliance with the Contract Requirements.  
 BY: *Patrick Spaine*  
 For Contracting Officer  
 DATE: **2-25-77**

926-21100



## Mezzanine Inspection Report (Scoping)

<b>Date:</b> 3/13/2015	<b>Station Name:</b> C05 - Rosslyn	<b>Mezzanine #:</b> 113	<b>Completed By:</b> Mike Butler
------------------------	------------------------------------	-------------------------	----------------------------------

### Summary

100% completion of video scoping and pull string installation - all ducts are not at capacity and viable for future use. The following work was completed:

- Video scoping and pull string installation for communication ducts in faregate array.
- Video scoping of power ducts in faregate array.
- Video scoping and pull string installation in power duct between Kiosk and Handhole 1.
- Video scoping and pull string installation in power duct between Handhole 1 and Handhole 2.
- Video scoping and pull string installation in power duct between Handhole 2 and Handhole 3.
- Video scoping and pull string installation in power duct between Handhole 3 and AFC Panel.

Refer to photos and drawings for further information.

### Scoping of Faregate Array(s)

Task	Yes/No	Notes
<b>Communications Duct – Faregate Array (6)</b>		
Was video scoping completed for the entire duct run?	Yes	Refer to "WMATA Rosslyn (Mezz 113) 3inch Comm Faregate.avi" and "WMATA Rosslyn (Mezz 113) 6inch Comm Faregate.avi"
Were pull strings installed at all faregates in the array?	Yes	
Were there any obstructions or blockages? Provide details of type and specific location.	No	
Is the duct at capacity? Provide additional details about the dimensions of ducts and number of wires.	No	3" and 6" ducts with less than 15 wires.
<b>Power Duct - Faregate Array (6)</b>		
Was video scoping completed for the entire duct run?	Yes	Refer to "WMATA Rosslyn (Mezz 113) 6inch Power Faregate.avi"
Were there any obstructions or blockages? Provide details of type and specific location.	No	
Is the duct at capacity? Provide additional details about the dimensions of ducts and number of wires.	No	6" duct with less than 15 wires.


Scoping of Power Duct - Kiosk to AFC Panel		
Task	Yes/No	Notes
<b>Kiosk to Handhole 1 (Distance: 5')</b>		
Was video scoping completed for the entire duct / conduit run?	Yes	Refer to "WMATA Rosslyn (Mezz 113) 6inch Kiosk to HH1 Power.avi"
Was pull string installed?	Yes	
Were there any obstructions or blockages? Provide details of type and specific location.	No	
Is the duct / conduit at capacity? Provide additional details about the dimensions of duct / conduit and number of wires.	No	6" duct with less than 15 wires.
<b>Handhole 1 to Handhole 2 (Distance: 25')</b>		
Was video scoping completed for the entire duct / conduit run?	Yes	Refer to "WMATA Rosslyn (Mezz 113) 6inch HH1 to HH2 Power.avi"
Was pull string installed?	Yes	
Were there any obstructions or blockages? Provide details of type and specific location.	No	
Is the duct / conduit at capacity? Provide additional details about the dimensions of duct / conduit and number of wires.	No	6" duct with less than 15 wires.
<b>Handhole 2 to Handhole 3 (Distance: 10')</b>		
Was video scoping completed for the entire duct / conduit run?	Yes	Refer to "WMATA Rosslyn (Mezz 113) 6inch HH2 to HH3 Power.avi"
Was pull string installed?	Yes	
Were there any obstructions or blockages? Provide details of type and specific location.	No	
Is the duct / conduit at capacity? Provide additional details about the dimensions of duct / conduit and number of wires.	No	6" duct with less than 15 wires.
<b>Handhole 3 to Junction Box to AFC Panel (Distance: 5' duct and 10' conduit)</b>		
Was video scoping completed for the entire duct / conduit run?	Yes	Refer to "WMATA Rosslyn (Mezz 113) 6inch HH3 to 90 into Jbox Power.avi"
Was pull string installed?	Yes	
Were there any obstructions or blockages? Provide details of type and specific location.	No	
Is the duct / conduit at capacity? Provide additional details about the dimensions of duct / conduit and number of wires.	No	6" duct with less than 15 wires, 2" conduit with less than 10 wires.
<b>Observations / Issues / Next Steps</b>		
- Total distance of power duct from Kiosk to AFC Panel is 55', including 45' of existing duct and 10' of existing conduit.		
<b>Sign Off</b>		
	<b>GFP Representative</b>	<b>WMATA PRGM</b>
<b>Name:</b>	Mike Butler	
<b>Signature:</b>		
<b>Date:</b>	03/20/15	

Photo 1 – Existing duct layout on mezzanine floor.

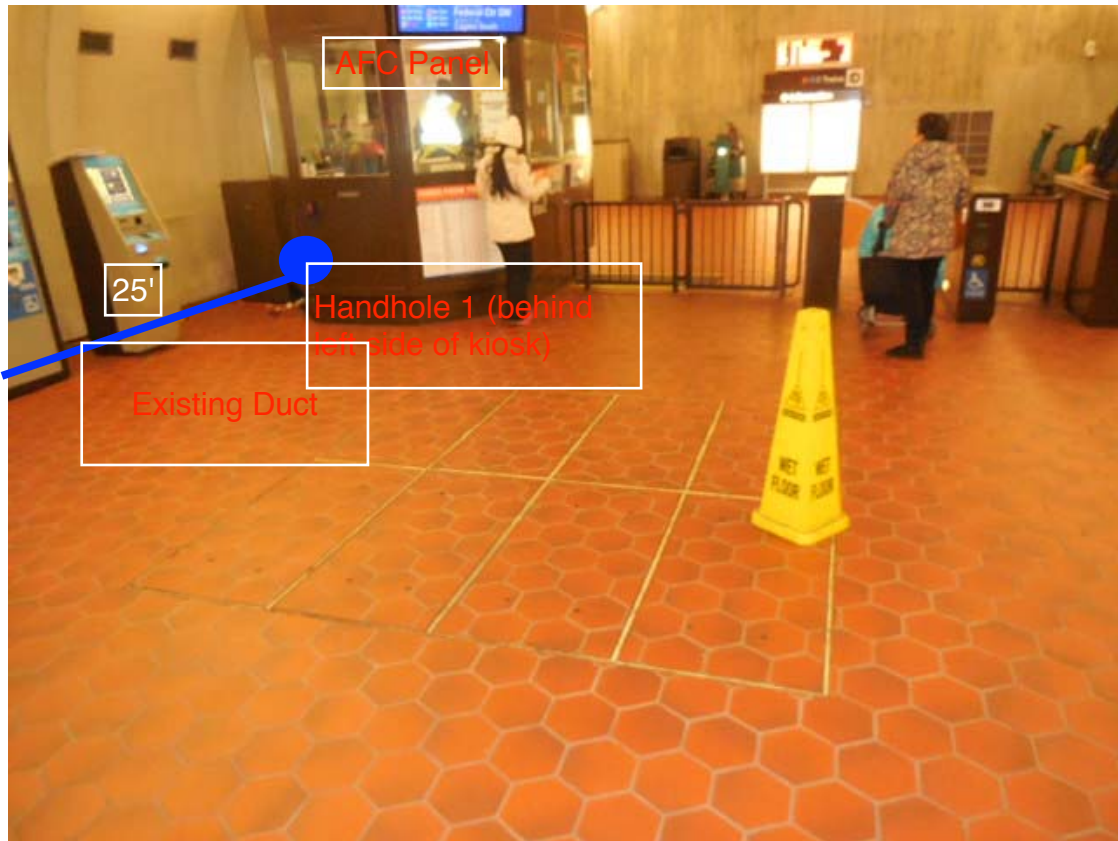
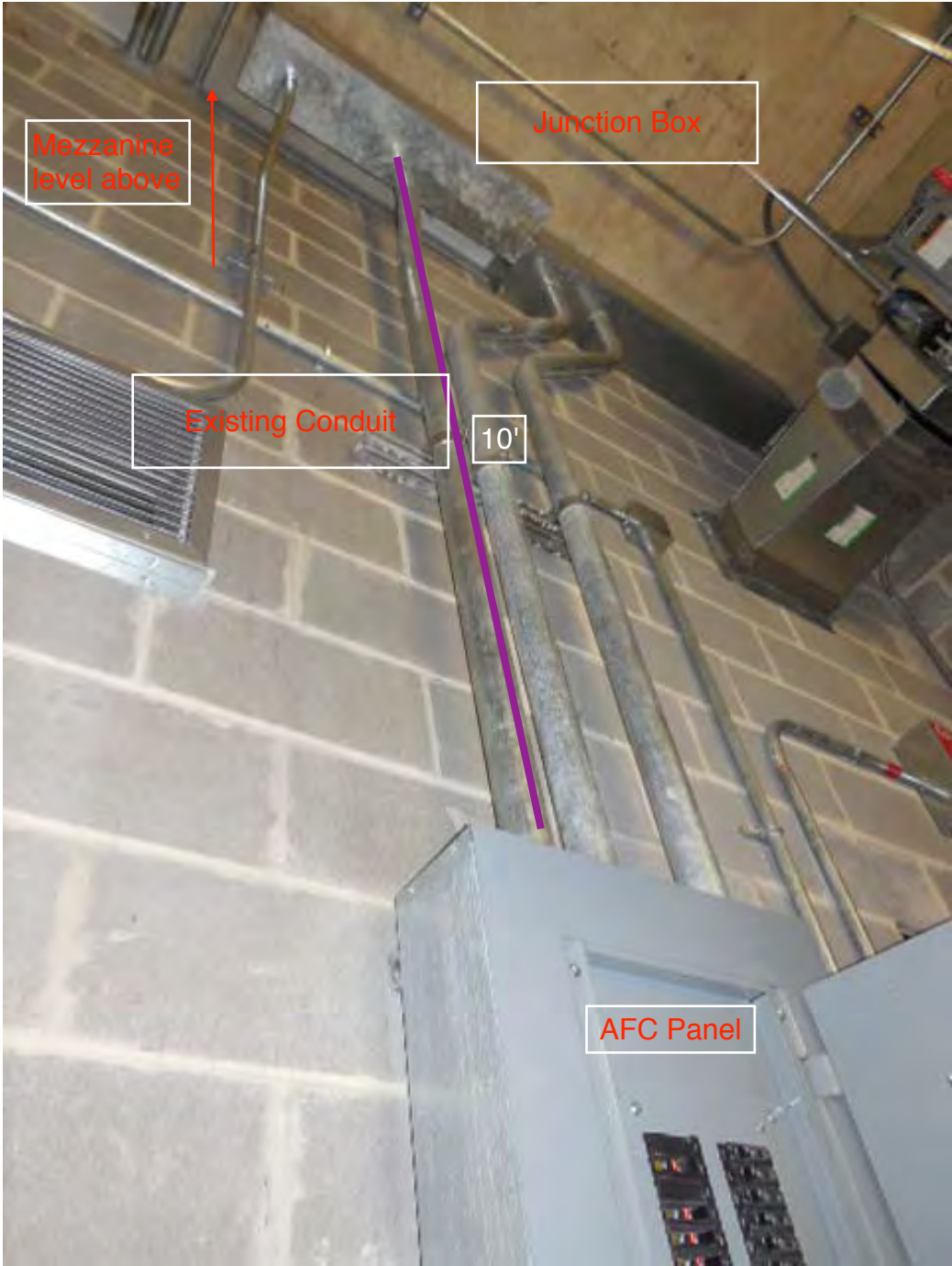


Photo 2 – Existing duct layout on mezzanine floor.

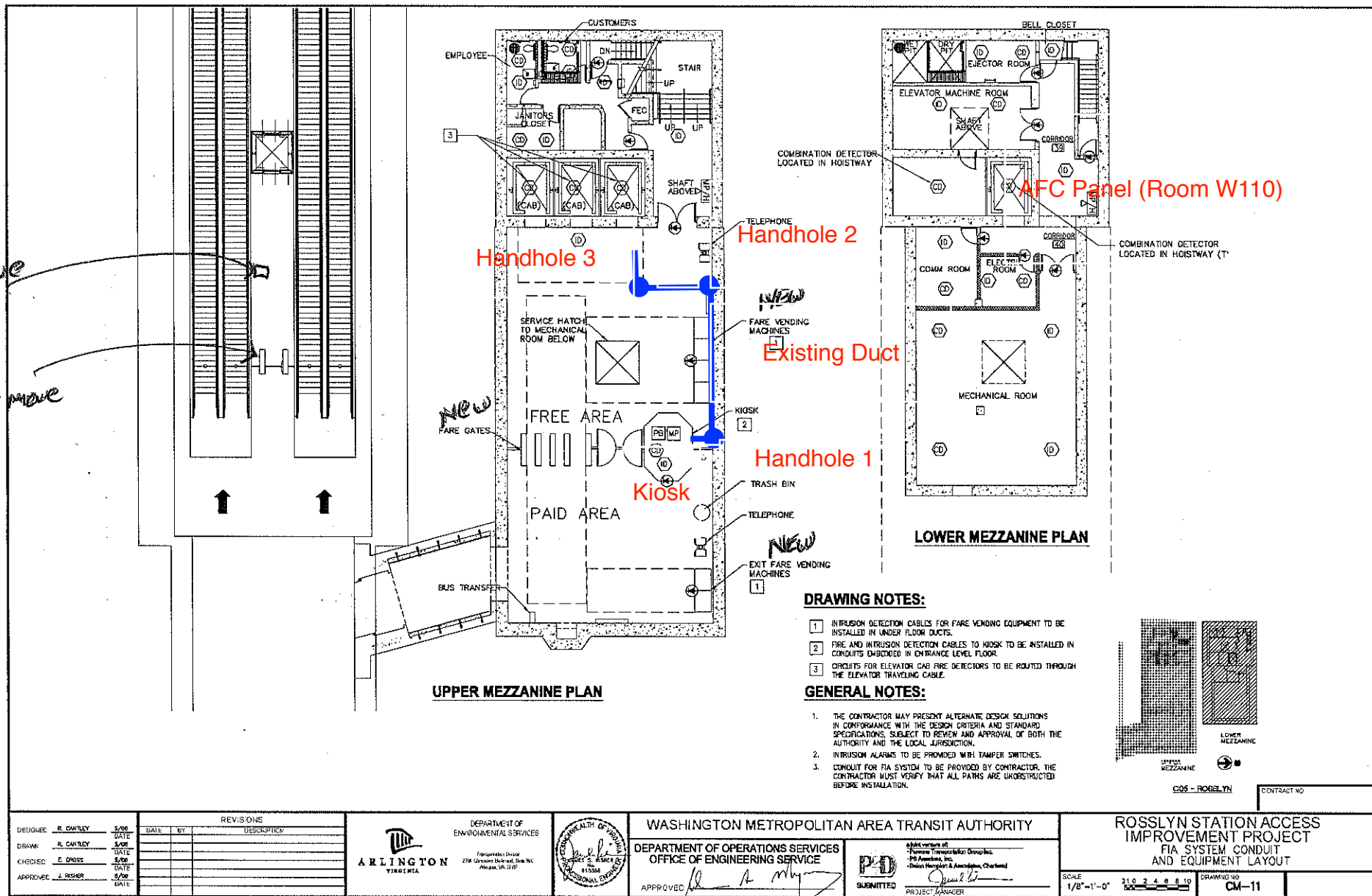


Photo 3 – Junction box and conduit feeding AFC Panel in Room W110.





Page 5 of 14



DESIGNED		DATE		REVISIONS	
E. CANTLEY	5/06	DATE	BY	DESCRIPTION	
A. CANTLEY	5/06	DATE			
E. CROSS	5/06	DATE			
A. FISHER	5/06	DATE			

DEPARTMENT OF ENVIRONMENTAL SERVICES  
 Transportation Division  
 2700 Cameron Station, Suite 100  
 Arlington, VA 22204



WASHINGTON METROPOLITAN AREA TRANSIT AUTHORITY  
 DEPARTMENT OF OPERATIONS SERVICES  
 OFFICE OF ENGINEERING SERVICE  
 APPROVED: *[Signature]*

PROJECT MANAGER  
 2005 version of  
 Federal Transportation Group Inc.  
 2005 Formulas, Inc.  
 Daniel, Mann, Johnson & Mendenhall, Chartered

ROSSLYN STATION ACCESS IMPROVEMENT PROJECT  
 FIA SYSTEM CONDUIT AND EQUIPMENT LAYOUT  
 SCALE: 1/8" = 1'-0"  
 DRAWING NO. CM-11

COS - ROSELTYN  
 CONTRACT NO.